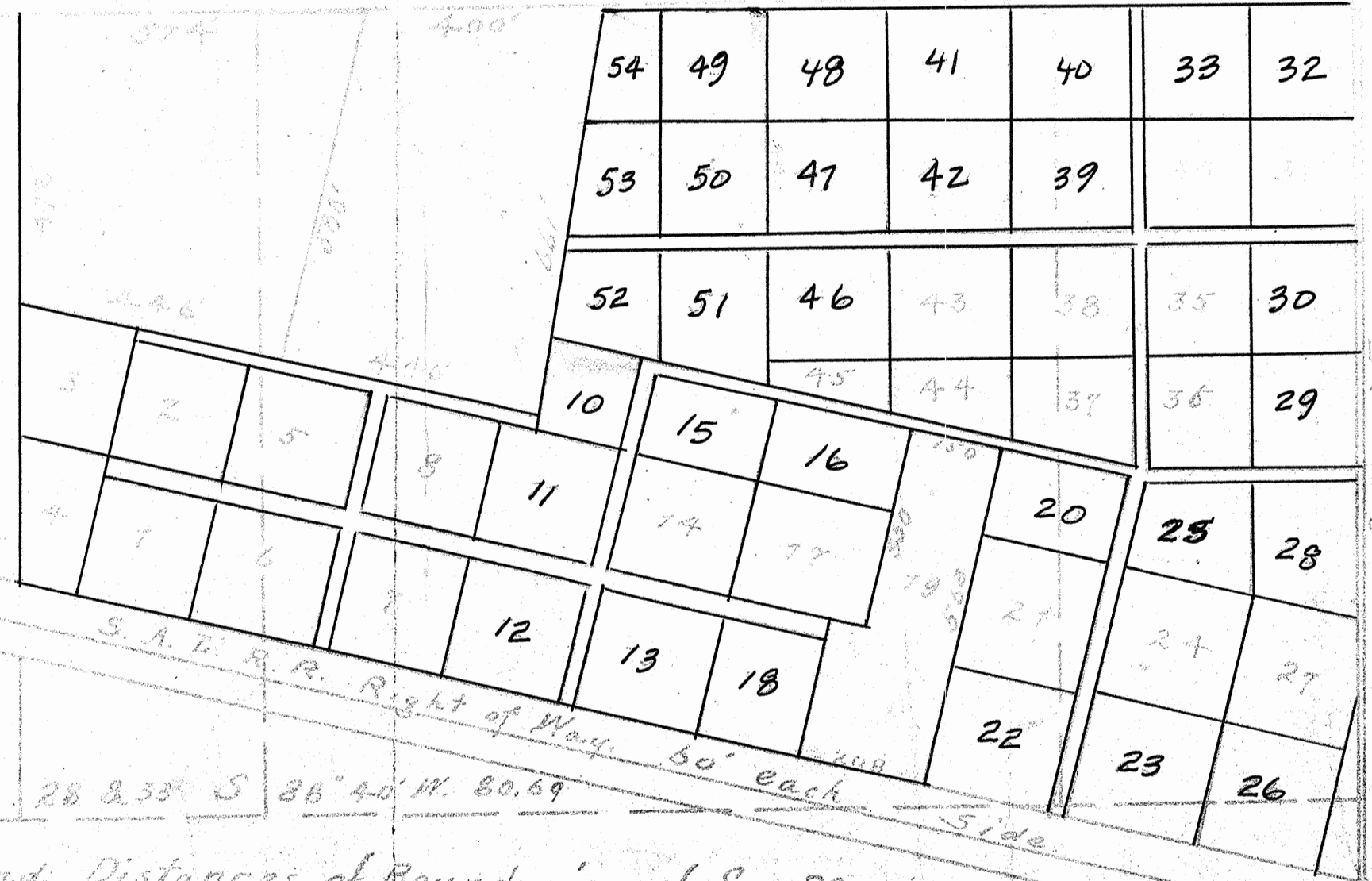


Map of Baya Survey
 Sec 28 T35 R17E
 October 7, 1905

Variation 1905 = 11° 15' W



Section Line between 28 & 35 S 86° 40' W 80.69

NB. Bearings and Distances of Boundaries of Sec 28 above
 taken from Official Map by Elisha Camp approved by the
 Surveyor Genl May 22, 1900 and on file in Genl Land Office
 Washington, D.C.