

PREPARED BY
 W. C. HALE & ASSOCIATES, INC.
 2125 SOUTH FIRST STREET
 P.O. BOX 1141
 LAKE CITY, FLA. 32055
 TEL. (904) 752-5640

PARADISE SOUTH

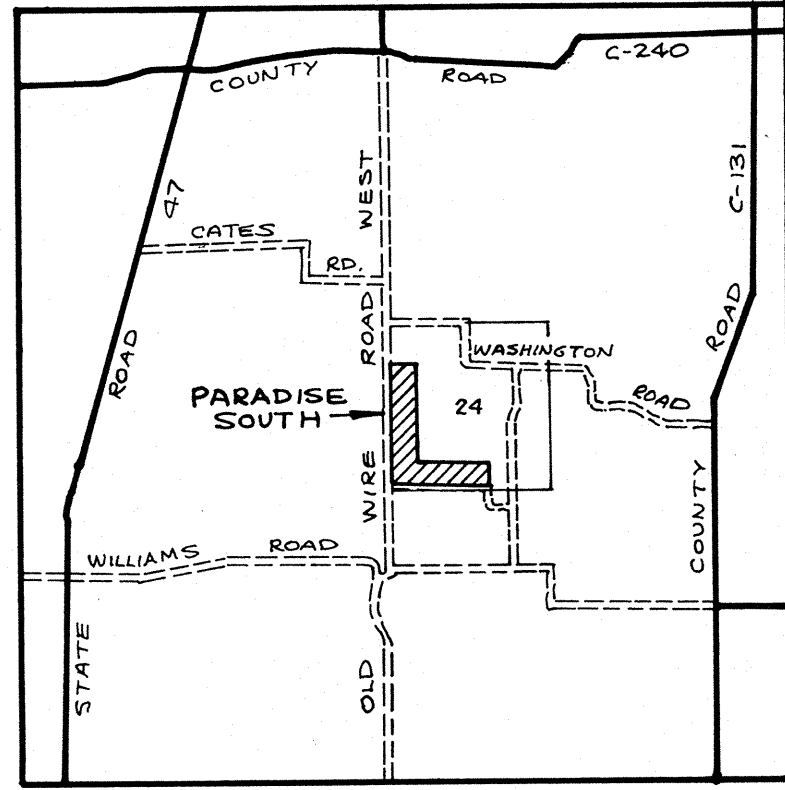
PLAT BOOK 6
 PAGE 67A

A SUBDIVISION IN
 SECTION 24, TOWNSHIP 5 SOUTH, RANGE 16 EAST
 COLUMBIA COUNTY, FLORIDA

SHEET 2 OF 2

NOTES

1. PRELIMINARY PLAN APPROVED JULY 3, 1991.
2. BEARINGS PROJECTED FROM THE NORTH LINE OF SECTION 24, T5-S, R16-E AS PER SURVEY BY L. E. BRITT, PLS 1079.
3. BOUNDARY CALCULATED FOR PERFECT CLOSURE PRECISION.
4. TOTAL AREA OF SUBDIVISION IS 100.31 ACRES.
5. BM DATUM IS MVD 1929.
6. PORTIONS OF THE SUBDIVISION LIE IN THE 100-YEAR FLOOD PLAIN AS SHOWN PER FLOOD INSURANCE RATE MAP (COMMUNITY PANEL NO. 120070 0225 B, EFFECTIVE DATE JANUARY 6, 1988). THE 100-YEAR FLOOD ELEVATIONS ARE CALCULATED ELEVATIONS BASED ON ACTUAL TOPOGRAPHY TAKEN IN THE FIELD.
7. MINIMUM FINISH FLOOR ELEVATIONS ARE AS SHOWN.
8. UTILITY EASEMENTS FOR CLAY ELECTRIC COOPERATIVE ARE AS FOLLOWS:
 ALONG ROADS - 15 FEET
 ALONG SIDE LOT LINES - 10 FEET EACH SIDE



LOCATION MAP
 SECTION 24, T5-S, R16-E



SCALE: 1" = 200'

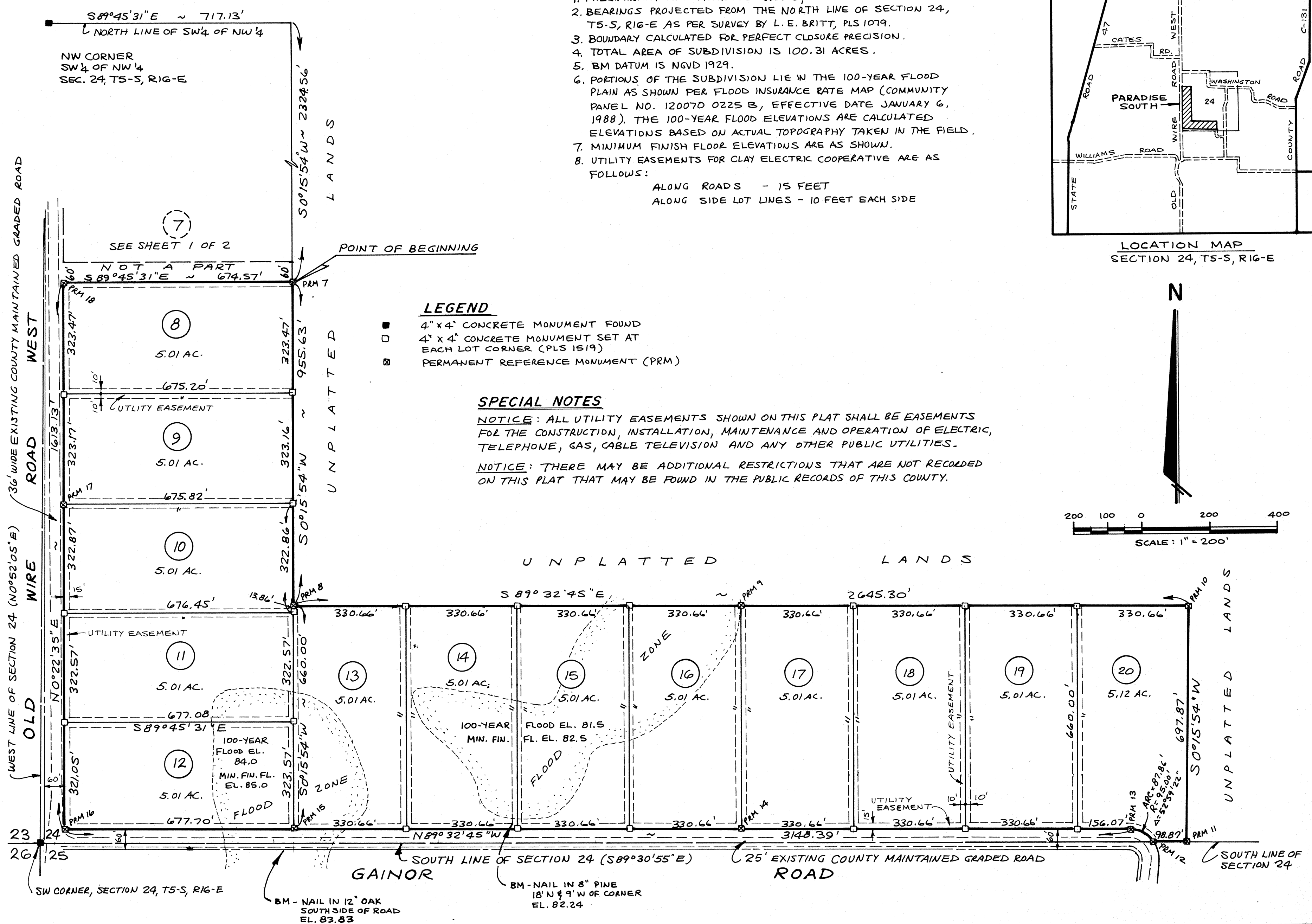
LEGEND

- 4" x 4" CONCRETE MONUMENT FOUND
- 4" x 4" CONCRETE MONUMENT SET AT EACH LOT CORNER (PLS 1519)
- ⊙ PERMANENT REFERENCE MONUMENT (PRM)

SPECIAL NOTES

NOTICE: ALL UTILITY EASEMENTS SHOWN ON THIS PLAT SHALL BE EASEMENTS FOR THE CONSTRUCTION, INSTALLATION, MAINTENANCE AND OPERATION OF ELECTRIC, TELEPHONE, GAS, CABLE TELEVISION AND ANY OTHER PUBLIC UTILITIES.

NOTICE: THERE MAY BE ADDITIONAL RESTRICTIONS THAT ARE NOT RECORDED ON THIS PLAT THAT MAY BE FOUND IN THE PUBLIC RECORDS OF THIS COUNTY.



FILE NUMBER 91-14087
 FILED AND RECORDED IN THE OFFICIAL RECORDS
 OF COLUMBIA COUNTY, FLORIDA
 10-10-1991 AT 11:17 O'CLOCK
 BY: [Signature] CLERK OF COURTS
 COLUMBIA COUNTY, FLORIDA
 OFFICIAL RECORDS
 BOOK 27 PAGE 15294 1530

